

Brook Butterflies

Staff

Mrs Waterworth



Mrs Humphries



Miss Bloomer



Mrs Price



Family Groups

- All children belong to a family group.
- They will have snack time and focussed learning in these small groups at intervals throughout session times.
- During family group times we give children opportunities to develop speaking and listening, communication and social skills as well as enhanced mathematics and English
- At the end of each session we always enjoy a story and rhyme time



Structure of Session

8:30–9:10 Registration/handwriting
9:10-9:25 Phonics Day of the week, Number, shape, weather
9:25-9:30 Visual Timetable
9.30-10.00 Outdoor Activities
10:00–10:20 Break and Social Time/ Rhyme time
10:20-11:15 Child Initiated Learning in the mathematics area
11:15-11:30 Story and word time

12:30-12:50 Registration/ handwriting
12:50- 1:15 Phonics Day of the week, Number, shape, weather
Visual Timetable
115-1.20pm Outdoor Activities
1:30 – 1:50 Break and Social Time/Rhyme time
1:50 – 2:55 Child Initiated Learning in English
3:00-3:15 Story and Word Time
3:30 Home time

Beginning of Each Session

- On the first day bring your child to the Butterfly entrance. Doors will be opened by staff at 8:30am for a morning session and 12.30pm for an afternoon session.
- The entrance is from the red gate (on the right hand side as you enter the main playground) and children will be dismissed from the main gate at 11:30am.
- Unfortunately during these times parents will not be able to bring the child through the door. There will be a staff member to walk them to their pegs and guide them to their family groups.
- Messages can be given to a member of staff who will pass them on to their family group leader.

At the end of the session

- The Butterfly doors will be opened for you to collect your child at 11.30am and 3.30pm.
- At 3.30pm please come to the gated area outside Butterflies entrance and we will dismiss your child to you.
- *Please wait* for your child to be dismissed by the member of staff/ family group leader. This is very important.

Early Years Foundation Stage Curriculum

Primary areas:

- Communication and Language- Understanding, listening and speaking.
- Personal, social and Emotional- Making relationships, self confidence/ self awareness, managing feelings and behaviour.
- Physical development- Health and self care, moving and handling.

Specific areas:

- Literacy- reading and writing
- Mathematics- Number and shape
- Understanding the world- Technology, people and communities, the world.
- Expressive arts and design- Being creative, exploring and using media and materials.

We plan all activities to narrow the gaps in learning. We use the interests of the children to plan themes and create awe and wonder.

- **Communication and Language**

“Language is the most powerful tool of any human being. It is undeniably the greatest asset we possess. A good grasp of language is synonymous with a good ability to think. In other words language and thought are inseparable”.

- **Vygotsky (1986)**

- **Communication and Language**

- Communication and language is a prime area of the Early Years foundation stage curriculum. It is a key area of every child's development. Giving a child the ability to communicate and understand language is the most powerful tool they will use to become life long learners.
- At nursery language skills are being developed through planned learning and play activities, story/rhyme times , phonics sessions and word time. Most importantly language is developed through good adult and child interactions.

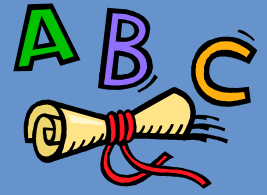
• **Communication and Language**

- How can you help you child develop language and communication skills?
- Make time for a story everyday.
- Sing songs and rhymes at home.
- Comment on what your child is doing during playtime. Join in with pretend play.
- Talk about the environment around them and their feelings and thoughts.
- Ask questions, be silly and have fun !!!

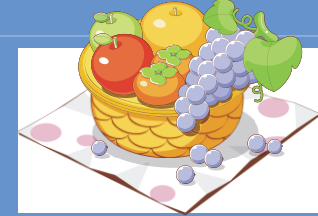
• Communication and Language

- We understand that all children's language and communication skills can progress differently.
- Our aim is to develop all of our children's language and communication skills to help them become life long learners.
- Please remember we are all a team and you know your child better than anyone. All the staff are here to help you and your child through their learning journey. If you have any concerns about your child's language and communication skills please come and speak to us.

Phonics



- We use Ruth Miskin phonics program. This begins in pre-school and continues throughout the school.
- Each day the children will join in with a phonics activity. It includes; listening opportunities, capturing key vocabulary and modelling the use of good language in a context. This is to give the children the tools they need to discriminate between different sounds. Word work is also an integral part of the phonics programme.
- As the children progress, they will join in with rhyming and rhythmic activities, learn letter sounds and will be taught the tripod grip to hold a pencil and write their name.



Snack time/Lunch Times

- Each child has a carton of milk and a piece of fruit during snack time. All children follow appropriate guidance regarding washing and hand sanitising.
- If your child attends all day they are able to bring a packed lunch or you may pay for a school cooked lunch. We do operate a cashless system called parent pay (This is not an app) and login details will be sent to you so you can access your personal account. This is where you will also pay for trips and extra curricular activities.
- We do ask that children bring a healthy packed lunch that does not include any fizzy drinks, sweets or chocolate. We also ask that you do not send your child with any foods containing nuts as we do have some children with nut allergies.

Assessment

- All children are assessed in all 7 areas of learning.
- Assessment is ongoing often through observations and gaps are identified and learning is scaffolded to narrow gaps in learning.
- You have opportunity to have a parents evening each term. At the moment consultations will take place over the phone and gives you opportunity to talk to your family group leader.
- Wow moments and proud clouds also allow you to contribute to children's learning journeys.
- Home learning ideas are always on the newsletter so you can keep up to date with our themes and increase learning opportunities at home.

Supporting Learning at Home

- Share books regularly with your child. Children will be given a book bag when they start and books will be changed each Monday.
- Let them draw, paint or use scissors with supervision
- Let them play with toys and games and try to join in whenever possible
- Ideas are given on our newsletter which relate to the topic and rhyme of the week. We love to see your home learning.
- Knowledge organiser will be given which covers activities and key vocabulary we will be covering.

Getting ready.....

- Good bedtime routine
- Encourage your child to talk in sentences
- Help your child to learn how to put their coat on and off
- Toilet trained and the importance of hand washing
- Start using a knife and fork properly
- If your child has only ever been at home with a parent then practise separation maybe useful
- On the website please see preparing your child for pre-school

Uniform

Children in Butterflies now wear uniform.

- Grey trousers (long or short) or a grey pinafore/skirt
- Blue check/gingham dress – summer only (optional)
- Royal blue sweatshirt/cardigan/fleece (Named sweatshirts can be brought through Totally Uniform in Kingswinford)
- Light blue shirt/blouse or polo shirt (long or short sleeved)
- Sensible shoes (**no trainers or high heels**)

TOILETING

All children attending Butterflies should be fully toilet trained and out of nappies. We are fully prepared for occasional accidents and won't expect children to be totally independent in using the toilet. Please supply spare pants and a change of clothes in your child's bag just in case and reassure them that they shouldn't worry if they have an accident in pre-school.

Links with Parents

- Parents are encouraged to come into the Butterfly room at the end of the session.
- A Butterflies newsletter is sent home with all of our news. This also includes home learning activity ideas for you to share with your child. There are also regular school newsletters.
- Parents are asked to participate in activities arranged by Brook Butterflies.
- We hold different events, rhyme time, graduation ceremonies and open sessions to which parents are invited.

What your child will need

- All children with long hair need to have it tied back for health and safety reasons.
- Please ensure all belongings have your child's name on them.
- Brook school book bags are very useful for letters, artwork and library books.
- Please do not send your child into pre-school with jewellery. If your child has pierced ears they should only wear stud type earrings, as this is a health and safety issue

Emergency Procedures

- There are a number emergency procedures that we have to practise during the year.
- These include:
 - Fire drill
 - Lock down
 - Rapid assembling
- We give the children warning about these and treat it like a game with the little ones.
- We do not give parents warning before hand.



This is the system we use for text and email messaging. If no one in your family is registered you will not receive important messages from school. Please do not wait to be upset that you or your child has missed something. School has advertised this service for many months now. It is your responsibility to sign up so that you can receive school messages.

We have just launched Parent Pay. Through this we provide an on line payment service for trips, dinner money, Buddies etc for your convenience. You should be able to pay at any time and from home or elsewhere.

Please look at www.brook.dudley.sch.uk

and

GET THE APP.

For you to access all the important school notifications you will need to download the app and get your own personal login information from the school.

Download the School Life app from either the Google Play store (for Android smartphones and tablets) or the Apple App Store (for iPhones, iPods and iPads).

Search for 'Schoollife' (all one word) and then look for the School Life logo;



CHILD PROTECTION

AT BROOK PRIMARY SCHOOL WE FOLLOW THE DUDLEY SAFEGUARDING CHILDREN PROCEDURES. THIS MEANS WE WORK IN CLOSE PARTNERSHIP WITH SOCIAL SERVICES TO MEET THE NEEDS OF OUR CHILDREN.

DUTY OF CARE

TEACHERS AND OTHER EDUCATION STAFF ARE ACCOUNTABLE FOR THE WAY IN WHICH THEY EXERCISE AUTHORITY; MANAGE RISK; USE RESOURCES; AND PROTECT PUPILS FROM DISCRIMINATION AND AVOIDABLE HARM.

ALL STAFF, WHETHER PAID OR VOLUNTARY, HAVE A DUTY TO KEEP YOUNG PEOPLE SAFE AND TO PROTECT THEM FROM SEXUAL, PHYSICAL AND EMOTIONAL HARM.

CHILDREN HAVE A RIGHT TO BE SAFE AND TO BE TREATED WITH RESPECT AND DIGNITY.

IT FOLLOWS THAT TRUSTED ADULTS ARE EXPECTED TO TAKE REASONABLE STEPS TO ENSURE THE SAFETY AND WELL-BEING OF PUPILS.

FAILURE TO DO SO MAY BE REGARDED AS PROFESSIONAL NEGLIGENCE.



CHILD PROTECTION

OUR DESIGNATED SAFEGUARDING LEAD FOR CHILD PROTECTION IS MISS. S NICKLIN-
DEPUTY SAFEGUARDING LEAD IS MRS M FELLOWS WHO ALSO DEALS WITH CHILD
PROTECTION ISSUES.

ANY PARENT, CHILD, MEMBER OF STAFF OR OTHER COMMUNITY MEMBER MAY EXPRESS A
CONCERN TO SOCIAL SERVICES. SOCIAL SERVICES DO NOT LIKE SCHOOL TO REPORT
THIRD PARTY ISSUES. THEY ASK US TO ENCOURAGE PEOPLE TO MAKE THEIR OWN REPORTS.

WHEN CONCERN NOTES ARE COMPLETED AT SCHOOL, A DECISION IS MADE WHETHER
THE SITUATION WILL BE MONITORED OR PARENTS SPOKEN TO, OR IF THERE IS SUFFICIENT
SERIOUS EVIDENCE, FOR A REPORT TO BE MADE TO SOCIAL SERVICES.

**ONCE SUCH A REPORT IS MADE, SOCIAL SERVICES WILL INVESTIGATE, NOT THE SCHOOL,
AND DETERMINE THE BEST COURSE OF ACTION FOR THE CHILD INVOLVED.**

Start Dates

Induction stay and play

Children who have NOT attended butterflies before are invited to an induction morning or afternoon.

Children who will attend mornings only or have a 30-hour place are invited to an induction morning on Wednesday 6th January 9.30-11.00am. Parents will need to bring their child to the main entrance of the school and a member of staff will be there to greet you. Unfortunately due to COVID restrictions parents will not be allowed to enter the school building.

Children who have a morning or afternoon session will start Butterflies independently on **Thursday 7th January**.
If your child has a 30 hour place they will start on **Monday 11th January**

Morning session- 8:30am- 11:30am
Afternoon session- 12:30pm- 3.30pm
Full time session – 8.30am-3.30pm